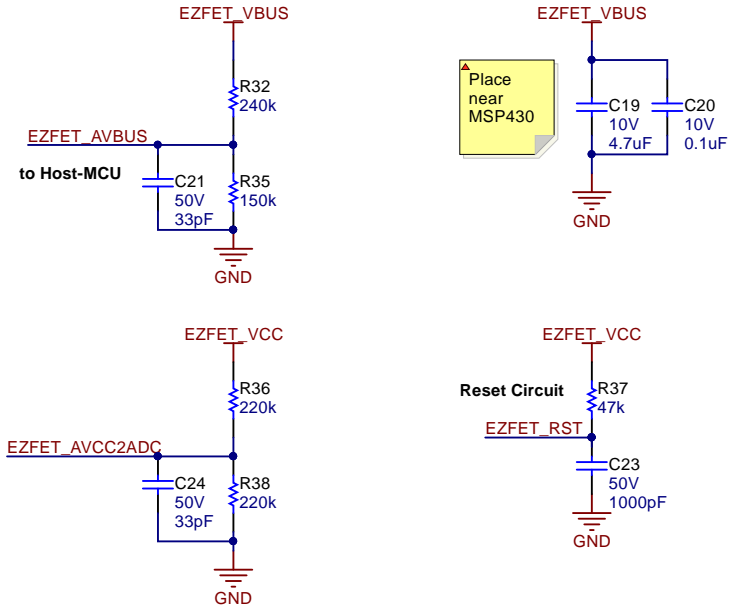
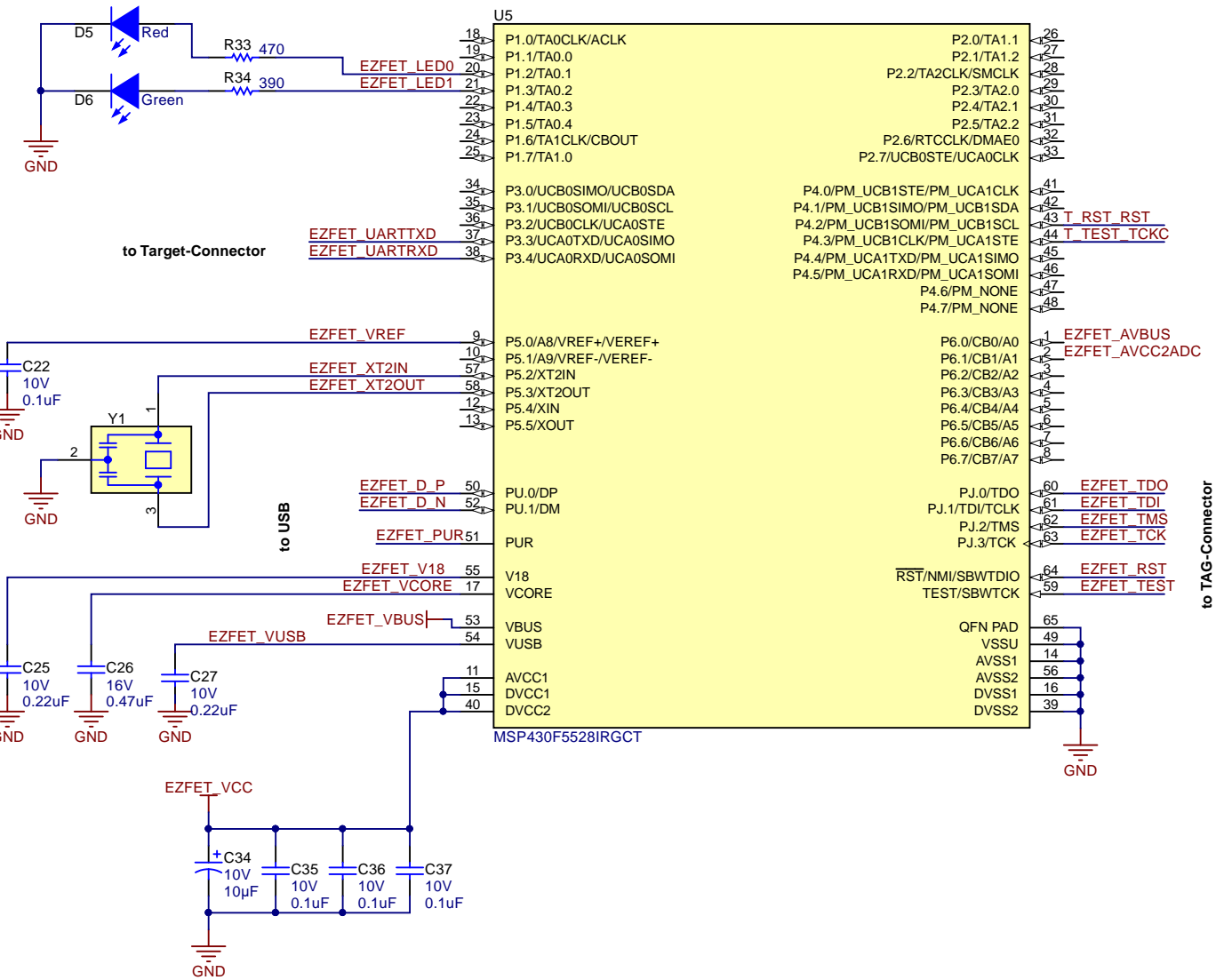


1	2	3	4	5	6										
A	<div>Revision History</div> <table><tr><td>Rev</td><td>ECN #</td><td>Approved Date</td><td>Approved by</td><td>Notes</td></tr><tr><td>N/A</td><td>N/A</td><td>N/A</td><td>N/A</td><td>N/A</td></tr></table>					Rev	ECN #	Approved Date	Approved by	Notes	N/A	N/A	N/A	N/A	N/A
						Rev	ECN #	Approved Date	Approved by	Notes					
						N/A	N/A	N/A	N/A	N/A					
						B	C	D							
1	2	3	4	5	6										

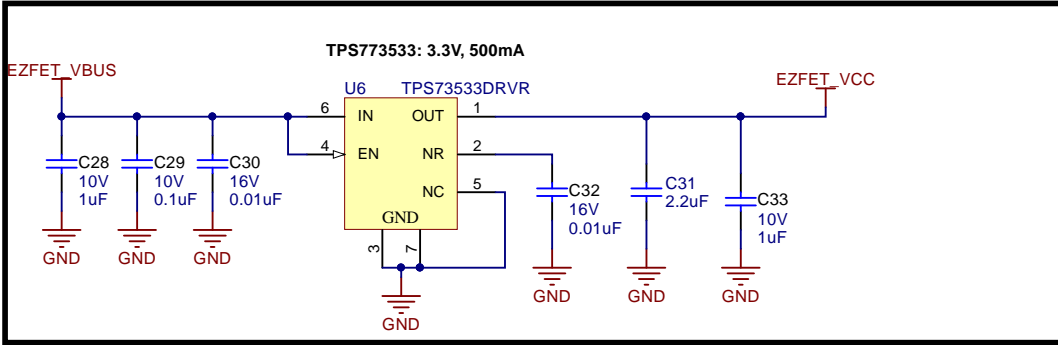
Place Block Diagram here (if appropriate) or delete this text box.  
If using a block diagram from another tool, save the picture as a .bmp file.  
Then, use menu Place|Drawing Tools|Graphic to insert the .png/.svg/.bmp file on the schematic.

Orderable: <a href="#">DRV8245S-Q1LEVM</a>		Designed for: <a href="#">Public Release</a>		Mod. Date: 8/28/2020	
TID #: <a href="#">N/A</a>		Project Title: <a href="#">DRV8245S/H-Q1EVM HTSSOP</a>			
Number: <a href="#">MD048</a>		Rev: <a href="#">E2</a>		Sheet Title:	
SVN Rev: Not in version control		Assembly Variant: <a href="#">001</a>		Sheet: <a href="#">1</a> of <a href="#">3</a>	
Drawn By:		File: <a href="#">CoverSheet.SchDoc</a>		Size: B	
Engineer: <a href="#">Michael Erdahl</a>		Contact: <a href="#">http://www.ti.com/support</a>		<a href="#">http://www.ti.com</a>	
© Texas Instruments 2020					

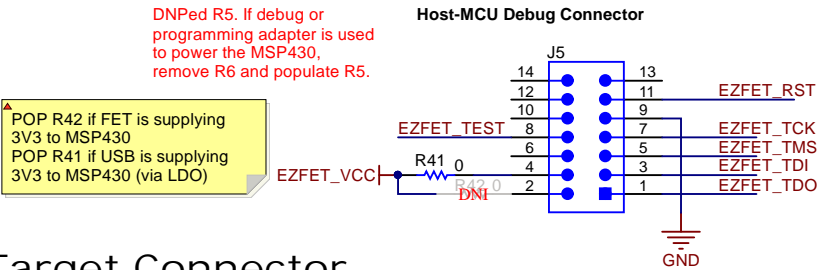
# Host MCU for Emulation



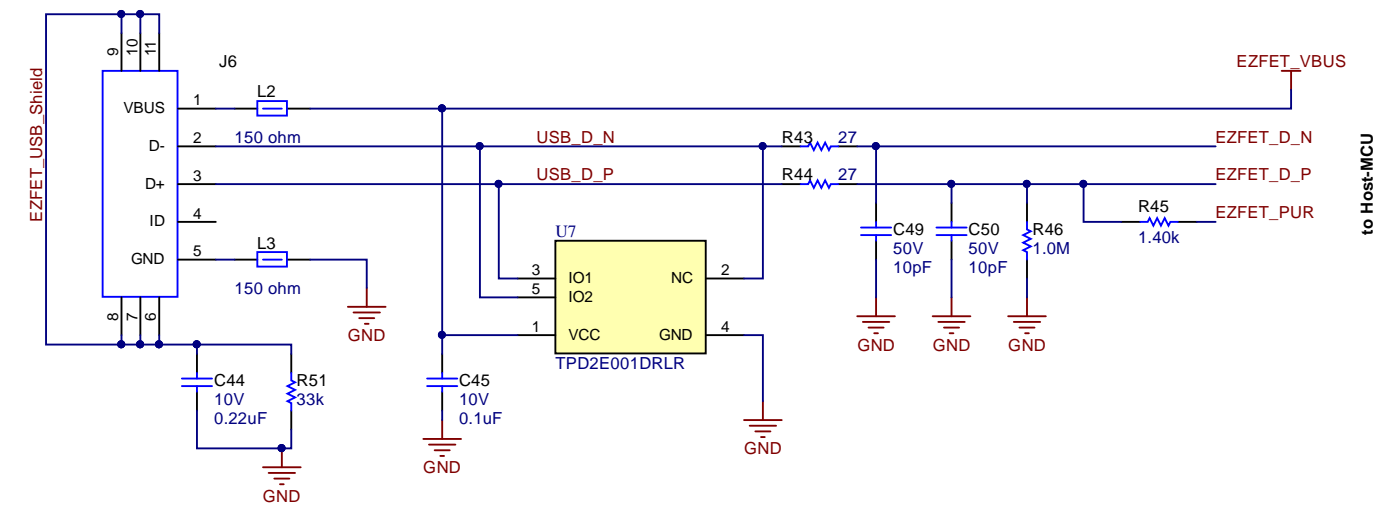
## 3.3V Power (EZFET\_VCC)



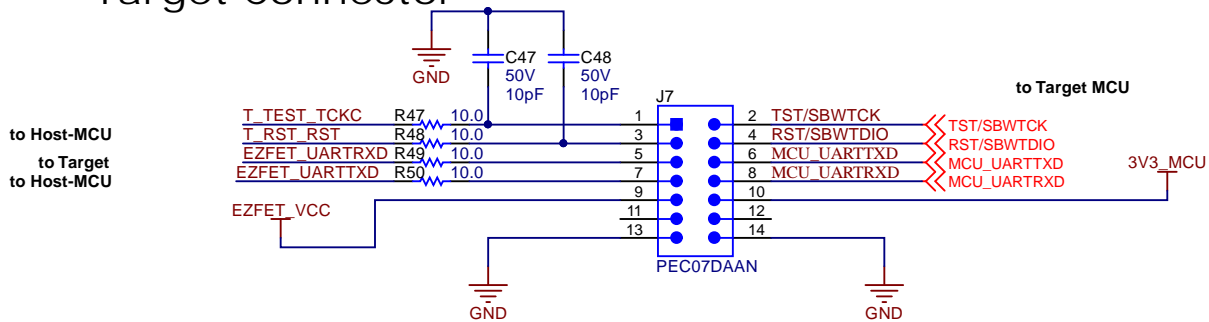
## TAG-Connector (Host Debug)



## USB-I nterface



## Target Connector

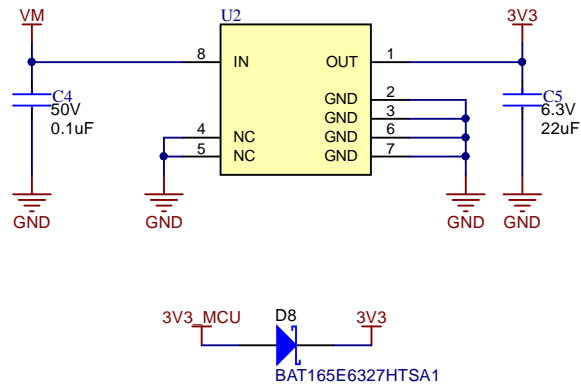


Texas Instruments and/or its licensors do not warrant the accuracy or completeness of this specification or any information contained therein. Texas Instruments and/or its licensors do not warrant that this design will meet the specifications, will be suitable for your application or fit for any particular purpose, or will operate in an implementation. Texas Instruments and/or its licensors do not warrant that the design is production worthy. You should completely validate and test your design implementation to confirm the system functionality for your application.

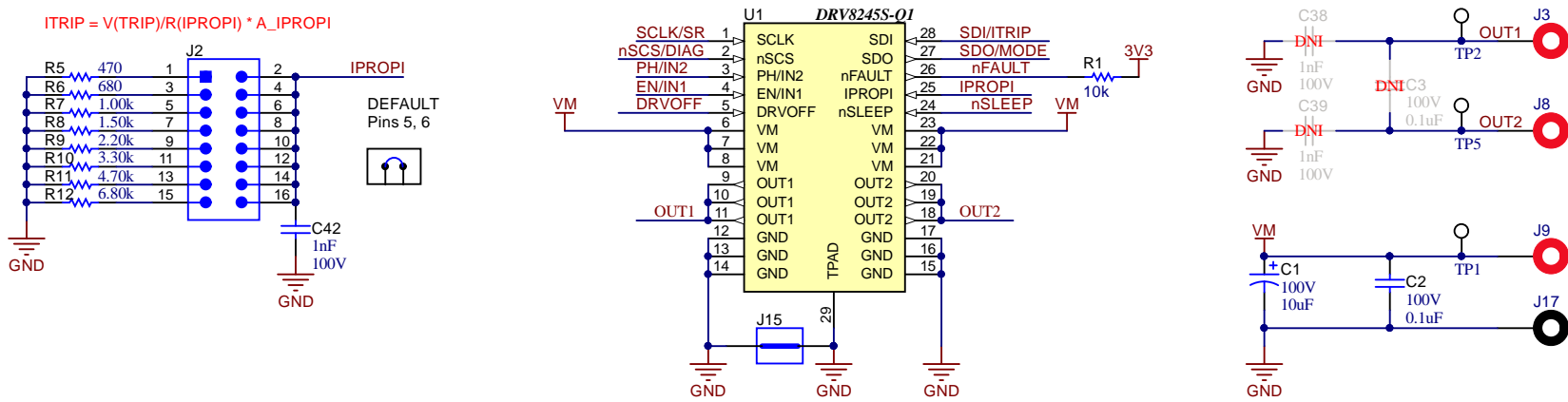
Orderable: DRV8245S-Q1LEVM	Designed for: Public Release	Mod. Date: 1/15/2021
TID #: N/A	Project Title: DRV8245S/H-Q1EVM HTSSOP	
Number: MD048	Rev: E2	Sheet Title:
SVN Rev: Not in version control	Assembly Variant: 001	Sheet: 2 of 3
Drawn By:	File: ezFET.SchDoc	Size: B
Engineer: Michael Erdahl	Contact: <a href="http://www.ti.com/support">http://www.ti.com/support</a>	<a href="http://www.ti.com">http://www.ti.com</a>



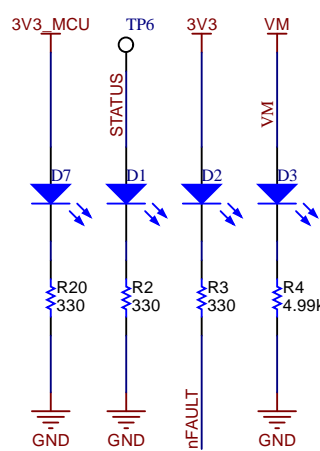
3.3V LDO



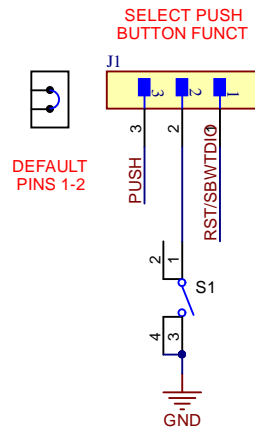
DRV8245S/H-Q1 HTSSOP



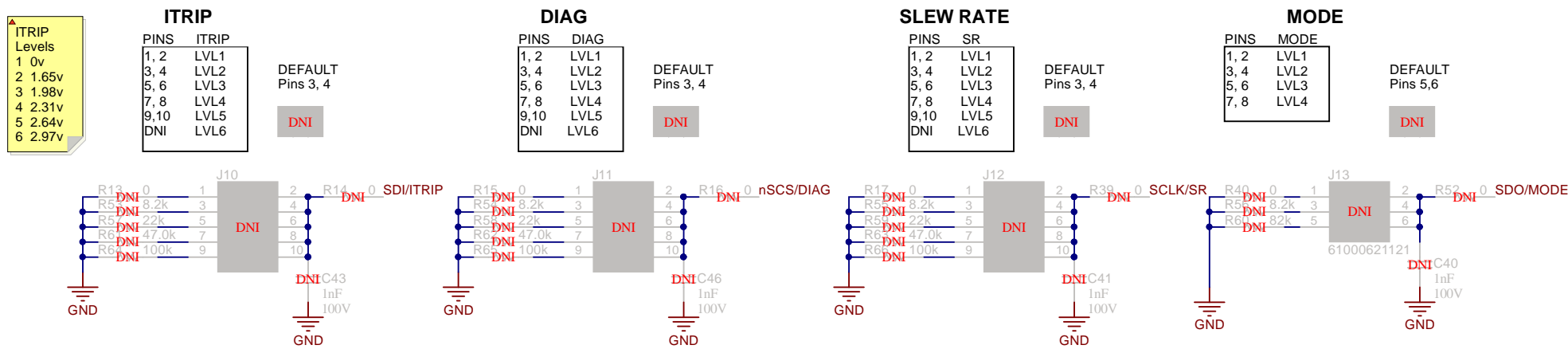
LEDS



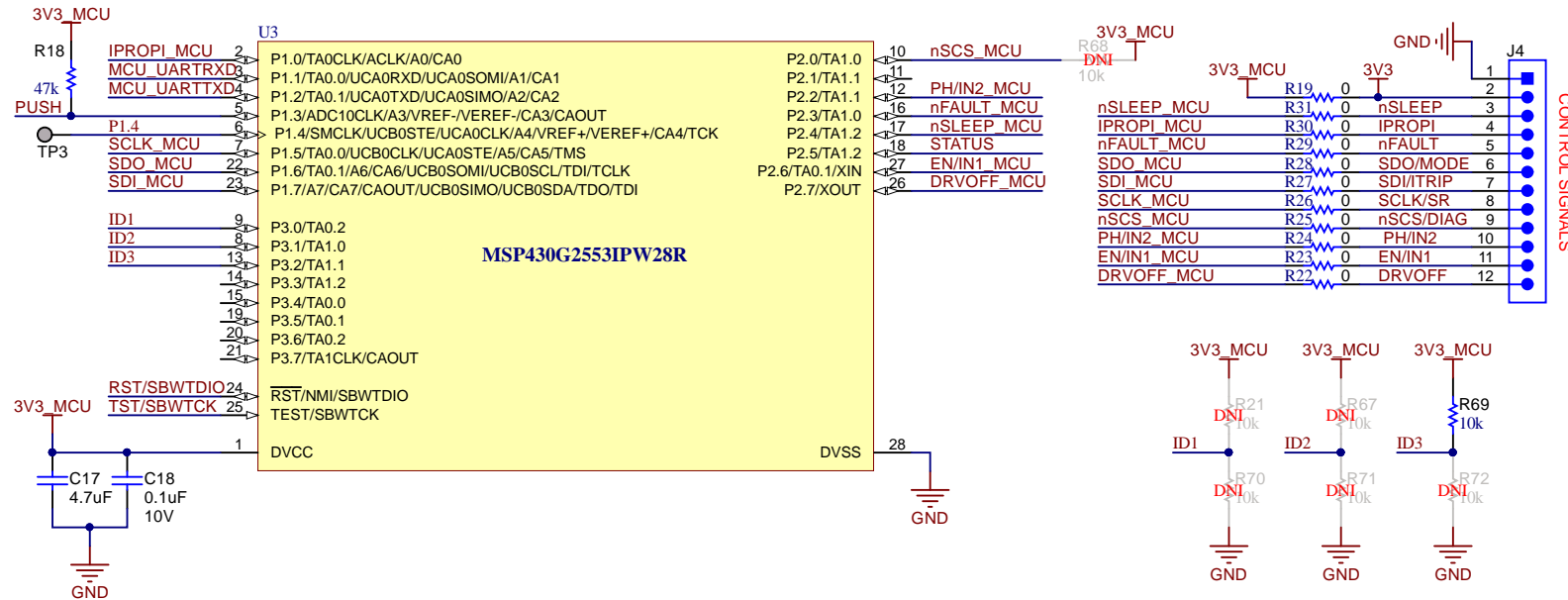
BUTTON



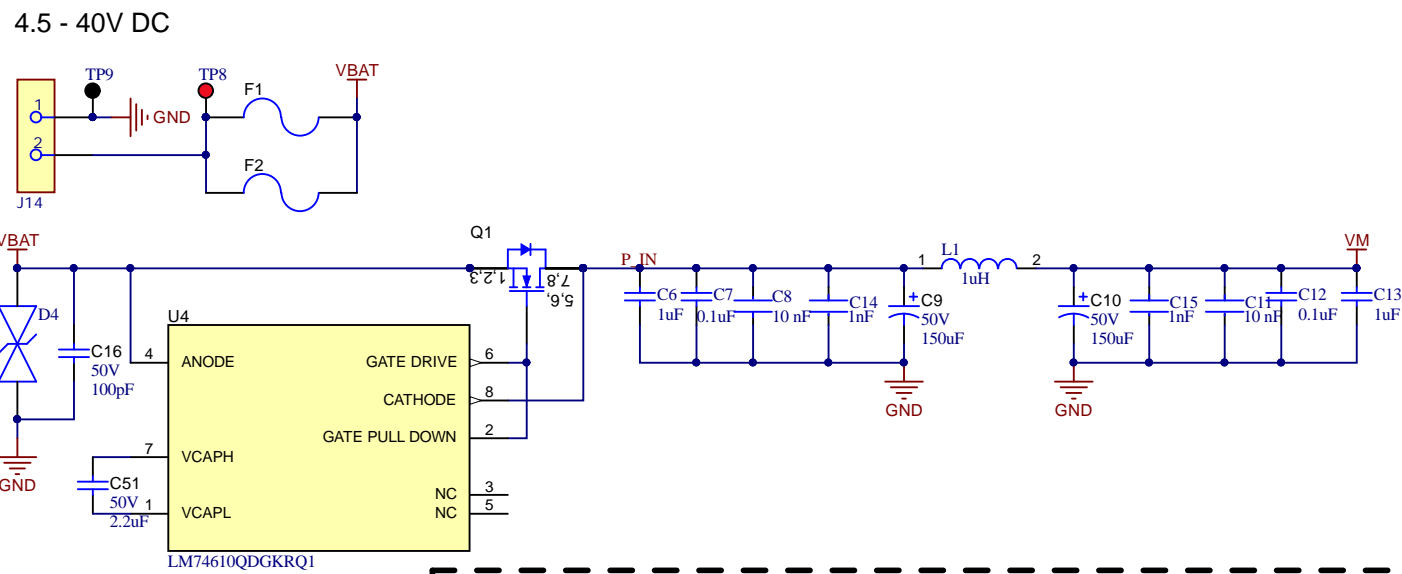
ANALOG CONTROL SIGNALS (H-variant only)



MSP430



MAIN INPUT SUPPLY REVERSE PROTECTION & FILTER



H1

SJ-5303 (CLEAR)

H2

SJ-5303 (CLEAR)

H3

SJ-5303 (CLEAR)

H4

SJ-5303 (CLEAR)

DNI

FID1

DNI

FID2

DNI

FID3

PCB Number: MD048

PCB Rev: E2

PCB

LOGO

Texas Instruments



PCB

LOGO

FCC disclaimer

PCB

LOGO

WEEE logo



CAUTION HOT SURFACE

PCB

LOGO

CAUTION. READ USER GUIDE BEFORE USE

LBL1

PCB Label

THT-14-423-10

Size: 0.65" x 0.20 "

ZZ1

Label Assembly Note

This Assembly Note is for PCB labels only

ZZ2

Assembly Note

These assemblies are ESD sensitive, ESD precautions shall be observed.

ZZ3

Assembly Note

These assemblies must be clean and free from flux and all contaminants. Use of no clean flux is not acceptable.

ZZ4

Assembly Note

These assemblies must comply with workmanship standards IPC-A-610 Class 2, unless otherwise specified.

Variant/Label Table	
Variant	Label Text
001	DRV8245S-Q1LEVM
002	DRV8245H-Q1LEVM